



nhow

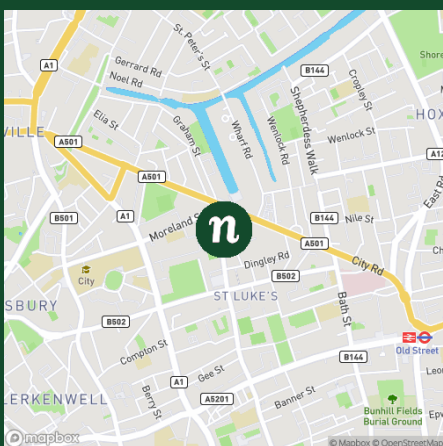
LONDON

HOTEL LOCATION

Located between the City, Islington and Shoreditch, nhow is the new hub of East London and a space where the city as you know it has been reloaded.

With one of London's largest conference and exhibition venues on its doorstep, the Business Design Centre, and less than 10 miles from one of the largest international convention centre, ExCel center, nhow London is the perfect place to call home whilst away on business.

You will also be in the prime location for exploring the local area, from Brick Lane Market to Box Park and Columbia Road Flower Market, or even venture slightly further afield to visit the tourist hot-spots including Buckingham Palace and the Tower of London.



London City airport
14 km / 35 min drive
Heathrow airport
30 km / 62 min drive
Old Street & Angel
tube stations
0,8 km / 10 min walk
Kings Cross St
Pancras International
2,2 km / 10 min drive

2 Macclesfield road
EC1V 8DG London
United Kingdom
T. +32 2 313 3200
nhowlondon@nhow-hotels.com
<https://www.nh-hotels.com/hotel/nhow-london>

OLD LONDON RELOADED

nhow London has been designed around the theme of old London reloaded, where traditional British icons have been transformed into unexpected wonders. With 190 vibrant bedrooms, three inspiring work laboratories, modern gym, large social space, and not forgetting the innovative restaurant and stylish bar, the hotel has been made for eating, drinking, meeting and working – before catching 40 winks in a stylish bedroom. In the warmer months the outdoor terrace provides the perfect spot to catch a breath of fresh air too. It's the small things that make a big difference and with room service, complimentary Wi-Fi, an all-day dining menu and more, everything has been covered to ensure your experience at nhow London is second to none.

SPECIAL OCCASIONS

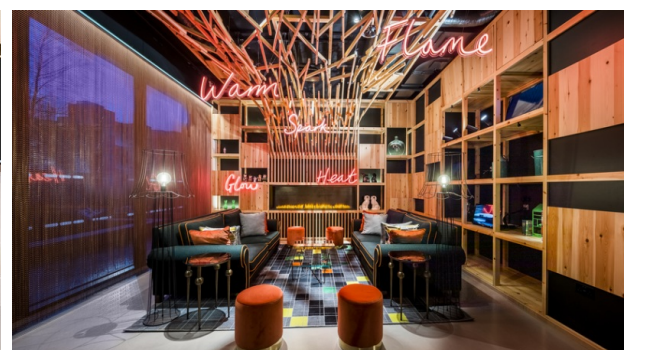
Looking for the perfect location for your next celebration? Look no further. Whether it be a wedding, Christmas party or private dining event, nhow London has a collection of truly unique locations for every occasion. If you're looking for the added wow factor, the fire place lounge or The Bell & Whistle will really impress your guests.

THE LABORATORIES








At nhow London we think outside the box, and that's why we have created three innovative laboratories to host your meetings and conferences. Forget about the uninspiring meeting rooms you are used to as these laboratories are each designed with their own individual character and fitted with the latest technological equipment. Ranging from 36 to 84 square metres, there is plenty of space for meetings and conferences of up to 70 delegates. Whether you are hosting a directors meeting, bespoke conference or small networking event, nhow London has the space for you.

HYBRID MEETINGS

You can now book hybrid meetings in the Visual Lab. We've installed the latest, brand new technology including quality conference cameras, plug and play connections and advanced ceiling microphones allowing for seamless sound during your meeting. Plus, our day delegate packages include everything you need for your meeting from meeting room rental to brain-boosting breaks and fulfilling lunches.





FUNCTION ROOMS AND THEIR CAPACITIES										
FUNCTION ROOM NAME	HEIGHT (m)	AREA (m²)	 Cocktail	 Square	 Dinner	 Classroom	 Theatre	 U-shape	 Cabaret	Daylight
Visual lab	2,3	84	70	30	48	36	70	24	36	<input checked="" type="checkbox"/>
Audio lab	2,3	36	-	12	14	-	-	-	-	<input checked="" type="checkbox"/>
Tech lab	2,3	36	15	5	8	-	-	-	-	<input checked="" type="checkbox"/>
The Bell & Whistle	3,9	160	-	-	70	-	-	-	-	<input checked="" type="checkbox"/>
Fireplace lounge	4,1	23	15	-	-	-	-	-	-	<input checked="" type="checkbox"/>
Lobby	3,2	418	150	-	-	-	-	-	-	<input checked="" type="checkbox"/>